



**REGIONAL SPECIALISED METEOROLOGICAL CENTRE-TROPICAL CYCLONES, NEW DELHI
TROPICAL WEATHER OUTLOOK**

DEMS-RSMC TROPICAL CYCLONES NEW DELHI DATED 07.09.2024

TROPICAL WEATHER OUTLOOK FOR NORTH INDIAN OCEAN (THE BAY OF BENGAL AND THE ARABIAN SEA) VALID FOR NEXT 168 HOURS ISSUED AT 0600 UTC OF 07.09.2024 BASED ON 0300 UTC OF 07.09.2024.

BAY OF BENGAL:

YESTERDAY'S LOW PRESSURE AREA OVER CENTRAL AND ADJOINING NORTH BAY OF BENGAL MOVED NEARLY NORTHWARDS AND LAY AS A WELL MARKED LOW PRESSURE AREA OVER THE NORTHWEST AND ADJOINING CENTRAL BAY OF BENGAL AT 0300 UTC OF TODAY, THE 7TH SEPTEMBER, 2024. THE ASSOCIATED CYCLONIC CIRCULATION EXTENDED UPTO 7.6 KM ABOVE MEAN SEA LEVEL TILTING SOUTHWESTWARDS WITH HEIGHT.

IT IS LIKELY TO MOVE NEARLY NORTHWARDS AND INTENSIFY INTO A DEPRESSION OVER NORTHWEST BAY OF BENGAL OFF NORTH ODISHA-GANGETIC WEST BENGAL COASTS ON 8TH SEPTEMBER. THEREAFTER, IT IS LIKELY TO MOVE WEST-NORTHWESTWARDS ACROSS GANGETIC WEST BENGAL, NORTH ODISHA, JHARKHAND AND ADJOINING NORTH CHHATTISGARH DURING SUBSEQUENT 3 DAYS.

AS PER INSAT-3D IMAGERY, LOW LEVEL CIRCULATION (LLC) OVER NORTHWEST AND ADJOINING CENTRAL BAY OF BENGAL & NEIGHBOURHOOD. ASSOCIATED SCATTERED TO BROKEN LOW AND MEDIUM CLOUDS WITH EMBEDDED INTENSE TO VERY INTENSE CONVECTION LAY OVER NORTH & CENTRAL BAY OF BENGAL. MINIMUM CLOUD TOP TEMPERATURE MINUS 85-93 DEGREE CELSIUS.

SCATTERED LOW AND MEDIUM CLOUDS WITH EMBEDDED INTENSE TO VERY INTENSE CONVECTION LAY OVER BAY OF BENGAL, ANDAMAN SEA, GULF OF MARTABAN AND TENASSERIM COAST.

***PROBABILITY OF CYCLOGENESIS (FORMATION OF DEPRESSION) DURING NEXT 168 HRS:**

24 HOURS	24-48 HOURS	48-72 HOURS	72-96 HOURS	96-120 HOURS	120-144 HOURS	144-168 HOURS
NIL	MOD	MOD	-	-	-	-

***NOTE: EVERY 24HR FORECAST IS VALID UPTO 0300 UTC (0830 IST) OF NEXT DAY
“-“ INDICATES GENESIS HAS ALREADY OCCURRED.**

ARABIAN SEA:

SCATTERED LOW AND MEDIUM CLOUDS WITH EMBEDDED ISOLATED WEAK TO MODERATE CONVECTION LAY OVER EASTCENTRAL & SOUTH ARABIAN SEA LAKSHADWEEP ISLANDS AREA, MALDIVES AREA AND COMORIN AREA.

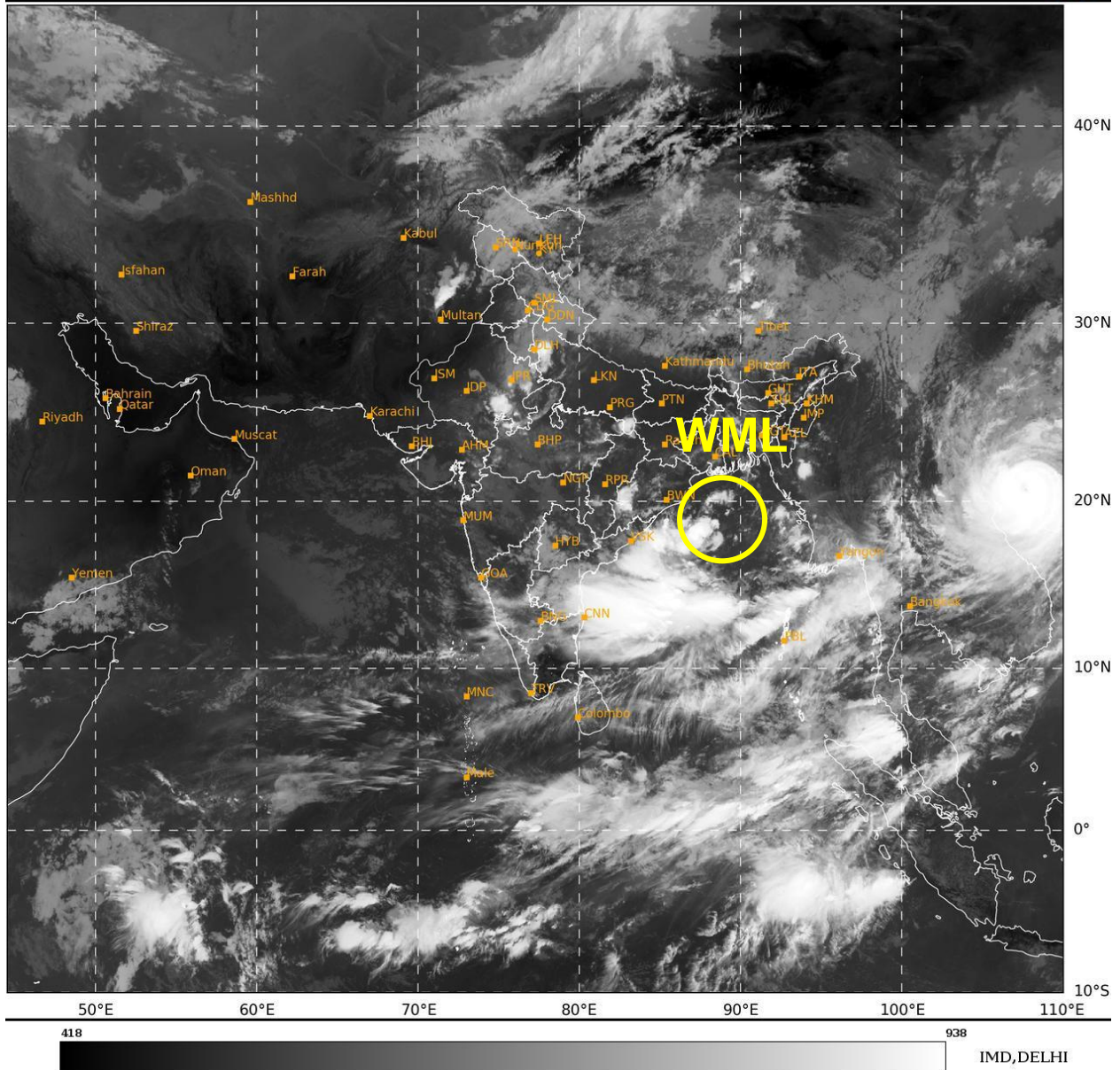
***PROBABILITY OF CYCLOGENESIS (FORMATION OF DEPRESSION) DURING NEXT 168 HRS:**

24 HOURS	24-48 HOURS	48-72 HOURS	72-96 HOURS	96-120 HOURS	120-144 HOURS	144-168 HOURS
NIL	NIL	NIL	NIL	NIL	NIL	NIL

***NOTE: EVERY 24HR FORECAST IS VALID UPTO 0300 UTC (0830 IST) OF NEXT DAY**

REMARKS:

THE CENTRE OF WELL MARKED LOW PRESSURE AREA IS AROUND 18.7N/87.0E OVER NORTHWEST & ADJOINING CENTRAL BAY OF BENGAL. ESTIMATED CENTRAL PRESSURE IS 1000 HPA NEAR CENTRE. A BUOY NEAR 17.8N/89.2E INDICATED MEAN SEA LEVEL PRESSURE OF 1000.2 HPA (PRESSURE FALL IN 24 HOURS AS 2.0 HPA) AND MSW OF 203⁰/5.3KT. ANOTHER BUOY NEAR 17.3N/89.2E INDICATED MEAN SEA LEVEL PRESSURE OF 1000.4HPA (PRESSURE FALL IN 24 HOURS AS 2.0 HPA) AND MSW OF 198⁰/3.4KT. A SHIP NEAR 14.4N/85.0E INDICATED MEAN SEA LEVEL PRESSURE OF 1005.0HPA AND MSW OF 240⁰/18KT. ANOTHER SHIP NEAR 13.4N/84.1E INDICATED MEAN SEA LEVEL PRESSURE OF 1005.9HPA AND MSW OF 281⁰/7.3KT. COASTAL STATIONS OVER NORTH ANDHRA PRADESH AND SOUTH ODISHA COASTS ARE REPORTING -2.0 TO -3.0 HPA PRESSURE DEPARTURE FROM NORMAL. SIMILARLY, THE PRESURE FALL OF -1.0 TO -1.5 HPA IS REPORTED FROM THESE STATIONS DURING PAST 24 HOURS.



WML: WELL MARKED LOW PRESSURE AREA

Cloud distribution: (a) Isolated: <25%, Scattered:25-50%, Broken: 51-75%, Solid:>75%, Convection Intensity: (a) Weak: Cloud Top Temperature (CTT) >-25°C, (b) Moderate: CTT: - 25°C to -40°C, (c) Intense: CTT: - 41°C to -70°C and (d) Very Intense: : Less than -70°C
PROBABILITY OF CYCLOGENESIS (FORMATION OF DEPRESSION):NIL: 0%, LOW: 1-33%, , MOD: 34-66% AND HIGH: 67-100%
This is a guidance Bulletin for WMO/ESCAP Panel Member countries. Visit respective National websites for Country specific Bulletins